

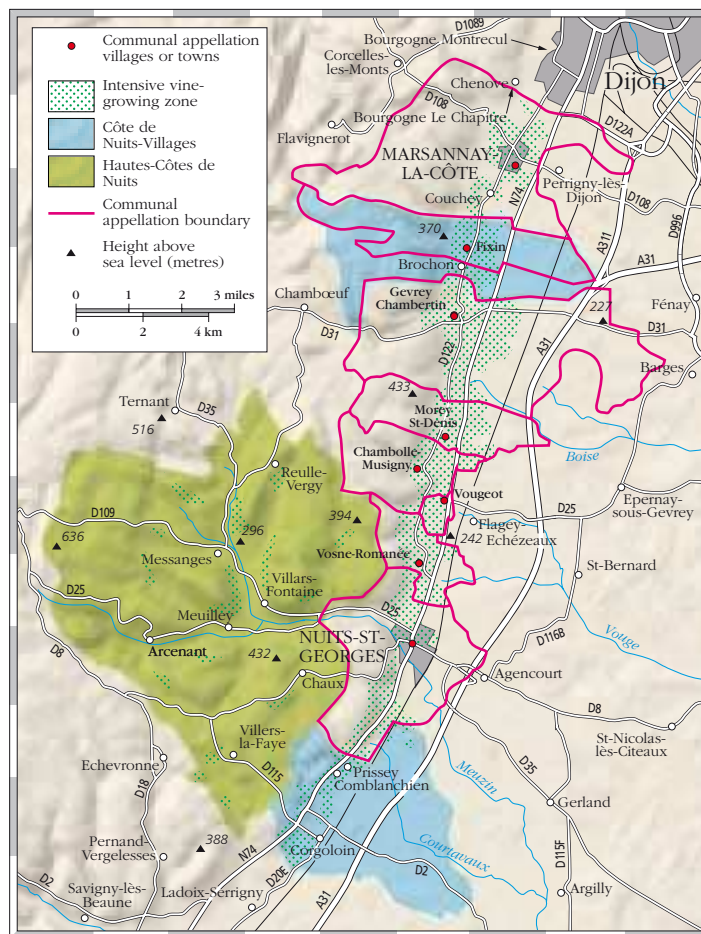
CÔTE DE NUITS AND HAUTES-CÔTES DE NUITS

The Côte de Nuits is essentially a red-wine area (with one or two extraordinary whites), and with 22 of Burgundy's 23 red grands crus, it is the place par excellence for Pinot Noir.

THE CÔTE D'OR, or "golden slope," is the departmental name for both the Côte de Nuits and the Côte de Beaune. Firmness and weight are the key words to describe the wines produced here, and these characteristics intensify as the vineyards progress north. A string of villages with some of the richest names in Burgundy—Gevrey-Chambertin, Chambolle-Musigny, Vosne-Romanée, and Nuits-St.-Georges—these slopes ring up dollar signs in the minds of merchants throughout the world. Ironically, the most famous appellations also produce some of Burgundy's worst wines.



CLOS ARLOT OF DOMAINE DE L'ARLOT
Purchased in 1987 by the dynamic AXA group, *Domaine de l'Arlot* is one of the most consistent, high-quality producers in Nuits-St.-Georges, making textbook Pinot Noir and, from its monopole Clos Arlot, minuscule amounts of sublime white wine.



FACTORS AFFECTING TASTE AND QUALITY

LOCATION
The Côte de Nuits is a narrow, continuous strip of vines stretching from Dijon to just north of Beaune, with the Hautes-Côtes de Nuits in the southwestern hinterland.

CLIMATE
Semicontinental climate with minimal Atlantic influence, which results in a long, cold winter, a humid spring, and a fairly hot, very sunny summer. Hail is its greatest natural hazard and heavy rain is often responsible for diluting the wines and causing rampant rot.

ASPECT
A series of east-facing slopes that curve in and out to give some vineyards northeastern, some southeastern aspects. The vines grow at an altitude of between 740 and 1,150 feet (225 to 350 meters) and, aside from Gevrey-Chambertin and Prémieux-Prissey, those vineyards that have the right to the village and higher appellations rarely extend eastward beyond the RN 74 road.

SOIL
A subsoil of sandy-limestone, which is exposed in places but usually covered by a chalky scree mixed with marl and clay particles on higher slopes and richer alluvial deposits on lower slopes. Higher slopes sometimes have red clay.

VITICULTURE AND VINIFICATION
The vines are trained low to benefit from heat reflected from the soil at night. For red wines, the grapes are almost always destemmed and the juice is kept in contact with the skins for between eight and 10 days. Less than three percent of the wine produced is white, but this is mostly high quality and traditionally cask fermented. The best wines are matured in oak.

GRAPE VARIETIES
Primary varieties: Pinot Noir, Chardonnay
Secondary varieties: Pinot Gris (known locally as Pinot Beurot), Pinot Liébault, Pinot Blanc, Aligoté, Melon de Bourgogne, Gamay

CÔTE DE NUITS AND HAUTES-CÔTES DE NUITS, *see also* p137
The best vineyards of the Côte de Nuits form a tighter, more compact strip than those of the Côte de Beaune, (see also p151), and the wines produced are, coincidentally, tighter, with more compact fruit.

CONFRÉRIE DES CHEVALIERS DU TASTEVIN

After the three terrible vintages of 1930, 1931, and 1932, and four years of world slump following the Wall Street Crash of 1929, Camille Rodier and Georges Faveley formed the Confrérie des Chevaliers du Tastevin to revive Burgundy's fortunes. They named the brotherhood after the traditional Burgundian *tastevin*, a shallow, dimpled, silver tasting-cup with a fluted edge.

The first investitures took place on November 16, 1934, in a cellar in Nuits-St.-Georges; the Confrérie now boasts thousands of members in numerous foreign chapters and averages 20 banquets a year at Château du Clos de Vougeot. Until the late 1980s, wines bearing the distinctive Tastevinage label used to be a useful means of quickly identifying wines within basic appellations that have risen above their modest status, but the selection gradually became less rigorous, with some decidedly underperforming wines slipping through. In recent years, however, there appears to be more consistency, once again making the Tastevinage label worth watching out for.

On average only one-third of the wines submitted for the Tastevinage receive the coveted label. No charge is made for entering. The minimum quantity for commercial availability is just 900 bottles, and there is no maximum. The wines are tasted blind, and most importantly, the tasters include hoteliers, restaurateurs, sommeliers, wine merchants, and wine press, as well as producers. A wine can also be rejected on the basis of laboratory analysis alone (if, for example, it has elevated levels of volatile acidity). Another plus point is the random checks that are carried out at the point of sale on all markets.

THE APPELLATIONS OF THE CÔTE DE NUITS AND HAUTES-CÔTES DE NUITS

Note Each *grand cru* of Côte de Nuits has its own appellation and is listed individually below. However, the *premiers crus* do not, and are therefore listed under the appellation of the village in which the vineyards are situated. *Premiers crus* that are virtually contiguous with *grand cru* vineyards are in *italics*; they are possibly superior to those that do not share a boundary with one or more *grand crus*, and generally superior to those that share boundaries with village AOC vineyards.

BONNES MARES AOC

Grand Cru

Bonnes Mares is the largest of the two *grands crus* of Chambolle-Musigny. It covers 34 acres (13.5 hectares) in the north of the village, on the opposite side to Musigny, the village's other *grand cru*, and extends a further 3.5 acres (1.5 hectares) into Morey-St.-Denis.

RED This wine combines a fabulous femininity of style with sheer depth of flavor to give something rich and luscious, yet complex and complete.

🍷 Pinot Noir, Pinot Gris, Pinot Liébault

🕒 12–25 years

✓ *Bouchard Père & Fils* • *Dujac* • *R. Groffier* • *Dominique Laurent* • *J. F. Mugnier* • *Christophe Roumier* • *Georges Roumier* • *Nicolas Potel* • *Comte Georges de Vogüé*

BOURGOGNE LA CHAPITRE AOC

One of the Côte de Nuits' two Bourgogne *lieux-dits* created in 1993, La Chapitre is located at Chenove, between Marsannay and Dijon. According to Anthony Hanson (in his book *Burgundy*), the wines of Chenove once fetched higher prices than those of Gevrey (Chenove's most famous vineyard is Clos du Roi, of which Labouré-Roi took management in 1994), but the only example I have tasted (Domaine Bouvier) was not special.

BOURGOGNE HAUTES- CÔTES DE NUITS AOC

A source of good-value wines, these vineyards have expanded since the 1970s, and the quality is improving noticeably. Half-red/half-rosé wines may be sold as Bourgogne Clairét Hautes-Côtes de Nuits AOC, but the style is outmoded and the appellation rarely encountered.

RED Medium-bodied and medium- to full-bodied wines with good fruit and some true Côte de Nuits character. The wines from some growers have fine oak nuances.

🍷 Pinot Noir, Pinot Liébault, Pinot Gris

🕒 4–10 years

WHITE Just 5 percent of the production is dry white. Most have a good weight of fruit, but little finesse.

🍷 Chardonnay, Pinot Blanc

🕒 1–4 years

ROSÉ Little-seen, but those that have cropped up have been dry, fruity, and delicious wines of some richness.

🍷 Pinot Noir, Pinot Liébault, Pinot Gris

🕒 1–3 years

✓ *Bertagna* • *J.-C. Boisset* • *Yves Chaley* • *Guy*

Dufouleur • *Michel Gros* • *Robert Jayer-Gilles* • *de Montmain* • *Naudin-Ferrand* • *Thévenot-le-Brun & Fils* • *Alain Verdet* **B** • *Thierry Vigot-Battault*

BOURGOGNE MONTREUIL OR MONTRE-CUL OR EN MONTRE-CUL AOC

The other Bourgogne *lieu-dit* in this district is actually located on the outskirts of Dijon. Some might think this is a wine to moon over, but the only wine I have tasted (again Domaine Bouvier) was again not special. If no one is going to produce something exciting under these Bourgogne *lieux-dits*, why bother with them in the first place?

CHAMBERTIN AOC

Grand Cru



This is one of the nine *grands crus* of Gevrey-Chambertin. All of them (quite legally) add the name Gevrey-Chambertin to their own and one, Clos de Bèze, actually has the right to sell its wines as Chambertin.

RED Always full in body and rich in extract, Chambertin is not, however, powerful like Corton, but graceful and feminine with a vivid color, stunning flavor, impeccable balance, and lush, velvety texture.

🍷 Pinot Noir, Pinot Gris, Pinot Liébault

🕒 12–30 years

✓ *Bouchard Père & Fils* • *Vincent Girardin* • *Leroy* **B** • *Denis Mortet* • *Henri Rebourseau* • *Armand Rousseau* • *Jean Trapet Père & Fils*

CHAMBERTIN- CLOS DE BÈZE AOC

Grand Cru



Another Gevrey-Chambertin *grand cru*. The wine may be sold simply as Chambertin, the name of a neighboring *grand cru*, but Chambertin may not call itself Clos de Bèze.

RED This wine is reputed to have a greater finesse than Chambertin but slightly less body. It is just as sublime.

🍷 Pinot Noir, Pinot Gris, Pinot Liébault

🕒 12–30 years

✓ *Bouchard Père & Fils* • *Bruno Clair* • *Faiveley* • *R. Groffier* • *Louis Jadot* • *Dominique Laurent* • *Lucien Lemoine* • *Armand Rousseau*

CHAMBOLLE-MUSIGNY AOC

This village is very favorably positioned, with a solid block of vines nestled in the shelter of a geological fold.

RED Many of these medium- to fairly full-bodied wines have surprising finesse and fragrance for mere village wines.

🍷 Pinot Noir, Pinot Gris, Pinot Liébault

🕒 8–15 years

✓ *Ghislaine Barthod* • *Sylvain Cathiard* (Les Clos de L'Orme) • *Dujac Père* • *J. F. Mugnier* • *Géantet Pansiot* • *Perrot-Minot* • *Daniel Rion & Fils* • *Georges Roumier* • *Comte Georges de Vogüé*

CHAMBOLLE-MUSIGNY PREMIER CRU AOC

Premiers crus: *Les Amoureuses*, *Les Baudes*, *Aux Beaux Bruns*, *Les Borniques*, *Les Carrières*, *Les Chabiots*, *Les Charmes*, *Les Châtelots*, *La Combe d'Orveau*, *Aux Combottes*, *Les Combottes*, *Les Cras*, *Derrière la Grange*, *Aux Echanges*, *Les Feusselottes*, *Les Fuées*, *Les Grands Murs*, *Les Groseilles*, *Les Gruenchers*, *Les Hauts Doix*, *Les Lavrottes*, *Les Noirots*, *Les Plantes*, *Les Sentiers*.

The outstanding *premier cru* is *Les Amoureuses*, with *Les Charmes* a very respectable second.

RED The best have a seductive bouquet and deliciously fragrant flavor.

🍷 Pinot Noir, Pinot Gris, Pinot Liébault

🕒 10–20 years

✓ *Amiot-Servelle* (Amoureuses) • *Ghislaine Barthod* • *Confuron-Cotéidot* • *R. Groffier* • *Moine Hudelot* • *Dominique Laurent* • *Lucien Lemoine* • *Leroy* **B** • *Denis Mortet* • *Mugnier* • *Perrot-Minot* • *Laurent Ponsot* • *Michelle & Patrice Rion* • *Christophe Roumier* • *Georges Roumier* • *Comte Georges de Vogüé*

CHAPELLE-CHAMBERTIN AOC

Grand Cru

This is one of the nine *grands crus* of Gevrey-Chambertin, comprised of two *climats* called En la Chapelle and Les Gémeaux.

RED The lightest of all the *grands crus*, with a delightful bouquet and flavor.

🍷 Pinot Noir, Pinot Gris, Pinot Liébault

🕒 8–20 years

✓ *Louis Jadot* • *Jean Trapet Père & Fils*

CHARMES-CHAMBERTIN AOC

Grand Cru

The largest Gevrey-Chambertin *grand cru*, part of the vineyard is known as Mazoyères, from which Mazoyères-Chambertin has evolved.

RED Soft, sumptuous wines with ripe-fruit flavors and pure Pinot character, although some slightly lack finesse.

🍷 Pinot Noir, Pinot Gris, Pinot Liébault

🕒 10–20 years

✓ *Denis Bachelet • Confuron-Cotétdot • Claude Dugat • Bernard Dugat-Py • Frederic Magnien • Géantet-Pansiot • Vincent Girardin • Perrot-Minot • Sérafin Père & Fils • Joseph Roty • Christophe Roumier • Armand Rousseau • Taupenot-Merme • de la Vougeraie B*

CLOS DE BÈZE AOC

An alternative appellation for Chambertin-Clos de Bèze. See Chambertin-Clos de Bèze AOC.

CLOS DES LAMBRAYS AOC

Grand Cru

This vineyard was classified as one of the four *grands crus* of Morey-St.-Denis only as recently as 1981, although the previous owner used to put “*grand cru classé*” (illegally) on the label.

RED The vineyard was replanted under new ownership and now produces fine, elegant wines with silky fruit of a good, easily recommendable quality.

🍷 Pinot Noir, Pinot Gris, Pinot Liébault

🕒 10–20 years

✓ *des Lambrays*

CLOS DE LA ROCHE AOC

Grand Cru

Covering an area of almost 42 acres (17 hectares), Clos de La Roche is twice the size of the other *grands crus* of Morey-St.-Denis.

RED A deep-colored, rich, and powerfully flavored *vin de garde* with a silky texture. Many consider it the greatest *grand cru* of Morey-St.-Denis.

🍷 Pinot Noir, Pinot Gris, Pinot Liébault

🕒 10–20 years

✓ *Dujac • Leroy B • Lucien Lemoine • Hubert Lignier • Michel Magnien & Fils • Ponsot • Armand Rousseau*

CLOS ST.-DENIS AOC

Grand Cru

This is the *grand cru* that the village of Morey attached to its name when it was the best growth in the village, a position now contested by Clos de la Roche and Clos de Tart.

RED Strong, fine, and firm wines with rich liquorice and berry flavors that require time to come together.

🍷 Pinot Noir, Pinot Gris, Pinot Liébault

🕒 10–25 years

✓ *Bertagna • Philippe Charlopin-Parizot • Philippe Charlopin • Dujac • Louis Jadot • Lucien Lemoine • Michel Magnien & Fils • Ponsot • Nicolas Potel*

CLOS DE TART AOC

Grand Cru

This is one of the four *grands crus* of Morey-St.-Denis. It is entirely owned by the *négociant* Mommessin. In addition to Clos de Tart itself, a tiny part of the Bonnes Mares *grand cru* also has the right to this appellation.

RED This *monopole* yields wines with a penetrating Pinot flavor, to which Mommessin adds such a spicy-vanilla character from 100 percent new oak that great bottle maturity is

required for a completely harmonious flavor.

🍷 Pinot Noir, Pinot Gris, Pinot Liébault

🕒 15–30 years

✓ *Mommessin*

CLOS DE VOUGEOT AOC

Grand Cru



The only *grand cru* of Vougeot, it is a massive 123-acre (50-hectare) block of vines with no fewer than 85 registered owners. It has been described as “an impressive sight, but a not very impressive site.” This mass ownership situation has often been used to illustrate the classic difference between Burgundy and Bordeaux, where an entire vineyard belongs to one chateau and so the wine can be blended to a standard quality and style every year.

RED With individual plots ranging in quality from truly great to very ordinary, operated by growers of varying skills, it is virtually impossible to unravel the intrinsic characteristics of this *cru*. Its best wines, however, have lots of silky Pinot fruit, an elegant balance, and a tendency toward finesse rather than fullness.

🍷 Pinot Noir, Pinot Gris, Pinot Liébault

🕒 10–25 years

✓ *Robert Arnoux • Joseph Drouhin • René Engel • Faiveley • Jean Grivot • Anne Gros • Michel Gros • Alain Hudelot-Noëllat • Louis Jadot • Dominique Laurent • Leroy B • Méo-Camuzet • Mugneret-Gibourg • Nicolas Potel • Château la Tour • de la Vougeraie B*

CLOS VOUGEOT AOC

See Clos de Vougeot AOC

CÔTE DE NUITS-VILLAGES AOC

This appellation covers the wines produced in one or more of five communes: Fixin and Brochon situated in the north of the district and Comblanchien, Corgoloin, and Prissy in the south.

RED Firm, fruity, and distinctive wines made in true, well-structured Côte de Nuits style.

🍷 Pinot Noir, Pinot Gris, Pinot Liébault

🕒 6–10 years

WHITE Very little is made—just 44 cases (4 hectoliters) in 1985—and I have never encountered it.

🍷 Chardonnay, Pinot Blanc

✓ *de l'Arlot • Michel Esmonin • Gachot-Monot • Naudin-Ferrand • Daniel Rion & Fils (Le Vaucrain)*

ECHÉZEUX AOC

Grand Cru

This 74-acre (30-hectare) vineyard is the larger of the two *grands crus* of Flagey-Echézeaux and is comprised of 11 *climats* owned by no fewer than 84 smallholders.



RED The best have a fine and fragrant flavor that relies more on delicacy than power, but too many deserve no more than a village appellation.

🍷 Pinot Noir, Pinot Gris, Pinot Liébault

🕒 10–20 years

✓ *Robert Arnoux • Albert Bichot (Clos Frantin) • Confuron-Cotétdot • Dujac • Engel • Faiveley • Forey Père & Fils • Vincent Girardin • Jean Grivot • A.-F. Gros • Louis Jadot • Robert Jayer-Gilles • Lucien Lemoine • Mongeard-Mugneret • Mugneret-Gibourg • de la Romanée-Conti • Emmanuel Rouget • Fabrice Vigot*

FIXIN AOC

Fixin was at one time the summer residence of the dukes of Burgundy.

RED Well-colored wines that can be firm, tannic *vins de garde* of excellent quality and even better value.

🍷 Pinot Noir, Pinot Gris, Pinot Liébault

🕒 6–12 years

WHITE Rich, dry, and concentrated wines that are rare, but exciting and well worth seeking out. Bruno Clair shows what Pinot Blanc can produce when it is not overcropped.

🍷 Chardonnay, Pinot Blanc

🕒 3–8 years

✓ *Bart • Bertbaut • Bruno Clair • Pierre Gelin • Philippe Joliet • Mongeard-Mugneret*

FIXIN PREMIER CRU AOC

Premiers crus: Les Arvelets, Clos du Chapitre, Aux Cheusots, Les Hervelets, Le Meix Bas, La Perrière, Queue de Hareng (located in neighboring Brochon), En Suchot, Le Village.

The best *premiers crus* are La Perrière and Clos du Chapitre. Clos de la Perrière is a monopoly owned by Philippe Joliet that encompasses En Suchot and Queue de Hareng as well as La Perrière itself.

RED Splendidly deep in color and full in body with masses of blackcurrant and redcurrant fruit, supported by a good tannic structure.

🍷 Pinot Noir, Pinot Gris, Pinot Liébault

🕒 10–20 years

WHITE I have not encountered any but it would not be unreasonable to assume that it might be at least as good as a basic Fixin *blanc*.

✓ *Bertbaut • Pierre Gelin • Philippe Joliet • Mongeard-Mugneret*

GEVREY-CHAMBERTIN AOC

Famous for its *grand cru* of Chambertin, the best growers also produce superb wines under this appellation. Some vineyards overlap the village of Brochon.

RED These well-colored wines are full, rich, and elegant, with a silky texture and a perfumed aftertaste reminiscent of the pure fruit

of Pinot Noir.

🍷 Pinot Noir, Pinot Gris, Pinot Liébault

🕒 7–15 years

✓ *Denis Bachelet • Alain Burguet • Philippe Charlopin • Confuron-Cotéridot • Droubin-Laroze • Bernard Dugat-Py • Dujac • Dujac Père • Labouré-Roi • Marc Roy (Vieilles Vignes, Clos Priéur) • Denis Mortet • Géantet Pansiot*

GEVREY-CHAMBERTIN PREMIER CRU AOC



Premiers crus: *Bel Air, La Bossière, Les Cazetiers, Champeaux, Champitenois, Champonnet, Clos du Chapitre, Cherbandes, Au Closeau, Combe au Moine, Aux Combottes, Les Corbeaux, Craipillot, En Ergot, Etournelles (or Estournelles), Fonteny, Les Goulots, Lavaut (or Lavout St-Jacques), La Perrière, Petite Chapelle, Petits Cazetiers, Plantigone (or Issarts), Poissenot, Clos Prieur-Haut (or Clos Priéure), La Romanée, Le Clos St-Jacques, Les Varoilles.*

RED These wines generally have more color, concentration, and finesse than the village wines, but, with the possible exception of Clos St-Jacques, do not quite match the *grands crus*.

🍷 Pinot Noir, Pinot Gris, Pinot Liébault

🕒 10–20 years

✓ *Alain Burguet • Bruno Clair • Droubin-Laroze • Claude Dugat • Bernard Dugat-Py • Dujac • Frédéric Esmonin • Michel Esmonin • Faiveley • Jean-Claude Fourrier • Herezstyn • Louis Jadot • Lucien Lemoine • Denis Mortet • Philippe Nadeff • Géantet Pansiot • Michelle & Patrice Rion • Joseph Roty • Armand Rousseau • Sérafin • Jean Trapet Père & Fils*

GRANDS ECHÉZEAUX AOC

Grand Cru

The smaller and superior of the two *grands crus* of Flagey-Echézeaux, this area is separated from the upper slopes of the Clos de Vougeot by a village boundary.

RED Fine and complex wines that should have a silky bouquet, often reminiscent of violets. The flavor can be very round and rich, but is balanced by a certain delicacy of fruit.

🍷 Pinot Noir, Pinot Gris, Pinot Liébault

🕒 10–20 years

✓ *Engel • Gros Frère & Sœur • François Lamarche • Mongeard-Mugneret • de la Romanée-Conti*

LA GRANDE RUE AOC

Grand Cru

The newest *grand cru* of Vosne-Romanée, La Grande Rue was generally considered to have the best potential of all the *premiers crus* in this village. Officially upgraded in 1992, although the quality of wine produced by its sole owner, François Lamarche, was erratic to say the least.

The *terroir* is, however, undeniably superior for a *premier cru* and as Lamarche has been on form since its promotion, perhaps the cart should come before the horse sometimes.

RED When Lamarche gets this right, the wine is well colored with deep, spicy-floral, black cherry fruit.

🍷 Pinot Noir, Pinot Gris, Pinot Liébault

🕒 7–15 years

✓ *Lamarche*

GRIOTTES-CHAMBERTIN AOC

Grand Cru

The smallest of the nine *grands crus* of Gevrey-Chambertin.

RED The best growers produce deep-colored, delicious wines with masses of soft-fruit flavors and all the velvety texture that could be expected of Chambertin itself.

🍷 Pinot Noir, Pinot Gris, Pinot Liébault

🕒 10–20 years

✓ *Joseph Droubin • Claude Dugat • Frédéric Esmonin • Jean-Claude Fourrier • Louis Jadot • Ponsot • Joseph Roty*

LATRICIÈRES- CHAMBERTIN AOC

Grand Cru

One of the nine *grands crus* of Gevrey-Chambertin, situated above the Mazoyères *climat* of Charmes-Chambertin. A tiny part of the adjoining *premier cru*, Aux Combottes, also has the right to use this AOC.

RED Solid structure and a certain austerity connect the two different styles of this wine (early-drinking and long-maturing). They sometimes lack fruit and generosity, but wines from the top growers recommended below are always the finest to be found.

🍷 Pinot Noir, Pinot Gris, Pinot Liébault

🕒 10–20 years

✓ *Droubin-Laroze • Faiveley • Leroy • Ponsot • Jean Trapet Père & Fils*

MARSANNAY AOC

This village, situated in the very north of the Côte de Nuits, has long been famous for its rosé and has recently developed a reputation for its red wines. In May 1987 it was upgraded to full village AOC status from its previous appellation of Bourgogne Marsannay. There is talk of a classification of Marsannay that would result in a new Marsannay *premier cru* AOC. This would be at least as justifiable as Maranges *premier cru* in the Côte de Beaune, not so much in the sense that either village has vineyards of truly *premier cru* quality, but it is at least useful in highlighting the better vineyards.

RED Firm and fruity wines with juicy redcurrant flavors, hints of liquorice, cinnamon and, if new oak has been used, vanilla.

🍷 Pinot Noir, Pinot Gris, Pinot Liébault

🕒 4–8 years

WHITE Mostly light and tangy, early-drinking wines, although the top wines made in a suitable vintage, by the likes of Charles Audoin and Louis Jadot, are a lot richer, creamier and offer serious aging potential.

🍷 Chardonnay

🕒 2–5 years

ROSÉ These dry wines are rich, rather than light and fragrant. Packed with ripe fruit flavors that can include blackberry, blackcurrant, raspberry

and cherry, they are best consumed young, although people do enjoy them when the wine has an orange tinge and the fruit is overmature.

🍷 Pinot Noir, Pinot Gris, Pinot Liébault

🕒 1–3 years

✓ *Charles Audoin • René Bouvier • Bernard Coillot (Les Boivins) • Louis Jadot • Denis Mortet (Les Longeroies) • Géantet Pansiot (Champ Perdrix)*

MAZIS-CHAMBERTIN AOC

Grand Cru

Sometimes known as Mazy-Chambertin. One of the nine *grands crus* of Gevrey-Chambertin.

RED These complex wines have a stature second only to Chambertin and Clos de Bèze. They have a fine, bright color, supersilky finesse, and a delicate flavor that lasts.

🍷 Pinot Noir, Pinot Gris, Pinot Liébault

🕒 10–20 years

✓ *Auvenay • Bernard Dugat-Py • Frédéric Esmonin • Faiveley • Jean-Michel Guillon • Lucien Lemoine • Leroy • Bernard Maume • Philippe Nadeff • Joseph Roty • Armand Rousseau*

MAZOYÈRES- CHAMBERTIN AOC

An alternative appellation for Charmes-Chambertin. See Charmes-Chambertin AOC.

MOREY-ST-DENIS AOC

This excellent little wine village tends to be overlooked. The fact that it is situated between two world-famous places, Gevrey-Chambertin and Chambolle-Musigny, coupled with the fact that Clos St-Denis is no longer considered to be Gevrey-Chambertin's top *grand cru*, does little to promote the name of this village.

RED The best of these village wines have a vivid color, a very expressive bouquet, and a smooth flavor with lots of finesse. A Morey-St-Denis from a domaine such as Dujac can have the quality of a top *premier cru*.

🍷 Pinot Noir, Pinot Gris, Pinot Liébault

🕒 8–15 years

WHITE Dujac produces an excellent Morey-St-Denis *blanc*, but more interesting, although less consistent, is Ponsot's Monts Luisants *blanc*. Although Monts Luisants is a *premier cru*, the upper section from which this wine comes is part of the village appellation (the southeastern corner is classified *grand cru* and sold as Clos de la Roche!). When Ponsot gets the Monts Luisants *blanc* right, it can be a superbly fresh, dry, buttery-rich wine and some writers have compared it to a Meursault.

🍷 Chardonnay, Pinot Blanc

🕒 3–8 years

✓ *Pierre Amiot • Philippe Charlopin • Dujac • Dujac Père • Hubert Lignier • Michel Magnien • Perrot-Minot • Ponsot • Georges Roumier*

MOREY-ST-DENIS PREMIER CRU AOC

Premiers crus: *Clos Baulet, Les Blanchards, La Bussière, Les Chaffots, Aux Charmes, Les Charrières, Les Chénevry, Aux Cheseaux, Les Faconnières, Les Genevrières, Les Gruenchers, Les Millandes, Monts Luisants, Clos des Ormes, Clos Sorbè, Les Sorbès, Côte Rôtie, La Riotte, Les Ruchots, Le Village.*



RED These wines should have all the color, bouquet, flavor, and finesse of the excellent village wines plus an added expression of *terroir*. The best *premiers crus* are: Clos des Ormes, Clos Sorbè, and Les Sorbès.

🍷 Pinot Noir, Pinot Gris, Pinot Liébault

🕒 10–20 years

WHITE The only white Morey-St.-Denis I know is from the upper section of Monts Luisants belonging to Ponsot (see Morey-St.-Denis AOC above). To my knowledge, no other white Morey-St.-Denis *premier cru* is made.

🍷 Chardonnay

✓ *Pierre Amiot • Dujac • Herezstyn • Hubert Lignier • Frédéric Magnien (Les Ruchots) • Perrot-Minot • Georges Roumier*

MUSIGNY AOC

Grand Cru

Musigny is the smaller of Chambolle-Musigny's two *grands crus*. It covers some 25 acres (10 hectares) on the opposite side of the village to Bonnes Mares.

RED These most stylish of wines have a fabulous color and a smooth, seductive, and spicy bouquet. The velvet-rich fruit flavor constantly unfolds to reveal a succession of taste experiences.

🍷 Pinot Noir, Pinot Gris, Pinot Liébault

🕒 10–30 years

WHITE Musigny *blanc* is a rare and expensive dry wine produced solely at Comte Georges de Vogüé. It combines the steel of a Chablis with the richness of a Montrachet, although it never quite achieves the quality of either.

🍷 Chardonnay

🕒 8–20 years

✓ *Joseph Droubin • Louis Jadot • Leroy B • J.-F. Mugnier (Château de Chambolle-Musigny) • Christophe Roumier • Georges Roumier • Comte Georges de Vogüé*

NUITS AOC

See Nuits-St.-Georges AOC

NUITS PREMIER CRU AOC

See Nuits-St.-Georges Premier Cru AOC

NUITS-ST.-GEORGES AOC

More than any other, the name of this town graphically projects the image of full flavor and sturdy structure for which the wines of the Côte de Nuits are justly famous.

RED These are deep-colored, full, and firm wines, but they can sometimes lack the style and character of wines from Gevrey, Chambolle, and Morey.

🍷 Pinot Noir, Pinot Gris, Pinot Liébault

🕒 7–15 years

WHITE I have not tasted this wine. (See white Nuits-St.-Georges *premier cru*).

✓ *de l'Arlet • R. Chevillon • J. Chauvenet • J.-J. Confuron • Confuron-Cotétidot • Thibault Liger-Belair • Bertrand Marchard de Gramont • A. Michelot • des Perdrix • Daniel Rion & Fils*

NUITS-ST.-GEORGES PREMIER CRU AOC



Premiers crus: Les Argillats, Les Argillières*, Clos Arlot*, Aux Boudots, Aux Bousselets, Les Cailles, Les Chaboeufs, Aux Chaignots, Chaines-Carteau (or Chaines-Carteaux), Aux Champs Perdrix, Clos des Corvées*, Clos des Corvées Pagets*, Aux Cras, Les Crots, Les Damodes, Les Didiers, Les Forêts* (or Clos des Forêts St.-Georges*), Les Grandes Vignes*, Château Gris, Les Hauts Pruliers, Clos de la Maréchale*, Aux Murgers, Aux Perdrix*, En la Perrière Noblet (or En la Perrière Noblot), Les Perrières, Les Porets, Les Poulettes, Les Procès, Les Pruliers, La Richemone, La Roncière, Rue de Chaux, Les St.-Georges, Clos St.-Marc (or Aux Corvées), Les Terres Blanches, Aux Thorey, Les Vallerots, Les Vaucrains, Aux Vignerondes.

*In the village of Prémieux-Prissey.

RED These wines have a splendid color, a spicy-rich bouquet, and a vibrant fruit flavor which can be nicely underpinned with vanilla.

🍷 Pinot Noir, Pinot Gris, Pinot Liébault

🕒 10–20 years

WHITE Henri Gouges's La Perrière is dry, powerful, almost fat, with a spicy-rich aftertaste. The vines used for this wine were propagated from a mutant Pinot Noir that produced bunches of both black and white grapes. Gouges cut a shoot from a white-grape-producing branch of the mutant vine in the mid-1930s, and there is now just over one acre (just under half a hectare) of the vines planted by Gouges, none of which have ever reverted to producing black grapes.

🍷 Chardonnay, Pinot Blanc

🕒 5–10 years

✓ *Bertrand Ambroise • de l'Arlet • Robert Arnoux • Bouchard Père & Fils • Jean Chauvenet (Les Perrières) • Robert Chevillon • J.-J. Confuron • Confuron-Cotétidot • Dubois & Fils • Faiveley • Forey Père & Fils • Henri Gouges • Jean Grivot • Alain Hudelot-Noëllat • Robert Jayer-Gilles • Dominique Laurent • Philippe & Vincent Lèchenaut • Leroy B • Thibault Liger-Belair • Alain Michelot • Mugneret-Gibourg • Gérard Mugneret • Gilles Remoriquet • Daniel Rion & Fils • Michelle & Patrice Rion • Patrice Rion • Antonin Rodet • Jean Tardy • de la Vougeraie B*

RICHEBOURG AOC

Grand Cru

One of the six *grands crus* at the heart of Vosne-Romanée's vineyards.



RED This is a gloriously rich wine that has a heavenly bouquet and is full of velvety and voluptuous fruit flavors.

🍷 Pinot Noir, Pinot Gris, Pinot Liébault

🕒 12–30 years

✓ *Jean Grivot • Anne Gros • Alain Hudelot-Noëllat • Leroy B • Méo-Camuzet • de la Romanée-Conti*

LA ROMANÉE AOC

Grand Cru

This vineyard is owned by the Liger-Belair family, but the wine was matured, bottled, and sold by Bouchard Père & Fils until 2002, when Louis-Michel Liger-Belair took over. Less than 2½ acres (1 hectare), it is the smallest *grand cru* of Vosne-Romanée.

RED This is a full, fine, and complex wine that might not have the voluptuous appeal of a Richebourg, but that certainly has the class to age gracefully.

🍷 Pinot Noir, Pinot Gris, Pinot Liébault

🕒 12–30 years

✓ *Bouchard Père & Fils • Vicomte Liger-Belair*

ROMANÉE-CONTI AOC

Grand Cru



This Vosne-Romanée *grand cru* is under 5 acres (2 hectares) in size and belongs solely to the famous Domaine de la Romanée-Conti.

RED As the most expensive burgundy in the world, this wine must always be judged by higher standards than all the rest. Yet I must admit that I never fail to be amazed by the stunning array of flavors that continuously unfold in this fabulously concentrated and utterly complex wine.

🍷 Pinot Noir, Pinot Gris, Pinot Liébault

🕒 15–35 years

✓ *de la Romanée-Conti*

ROMANÉE-ST.-VIVANT AOC

Grand Cru

The largest of the six *grands crus* on the lowest slopes and closest to the village.

RED This is the lightest of the fabulous *grands crus* of Vosne-Romanée, but what it lacks in power and weight it makes up for in finesse.

🍷 Pinot Noir, Pinot Gris, Pinot Liébault

🕒 10–25 years



VINEYARDS OF CLOS DE VOUGEOT ON THE CÔTE DE NUITS

The *Château du Clos de Vougeot* has played a big part in the region's wine industry for many years. However, the 124 acres (50 hectares) of vineyards surrounding the *château* are split into more than 80 plots.

✓ Robert Arnoux • Sylvain Cathiard • J.-J. Confuron • Joseph Drouhin • Follin-Arbelet • Alain Hudelot-Noëllat • Lucien Lemoine • Leroy **B** • de la Romanée-Conti

RUCHOTTES-CHAMBERTIN AOC

Grand Cru

This is the second-smallest of the nine *grands crus* of Gevrey-Chambertin. It is situated above Mazis-Chambertin and is the last *grand cru* before the slope turns to face north.

RED Normally one of the lighter Chambertin look-alikes, but top growers like Roumier and Rousseau seem to achieve a bagful of added ingredients in their splendidly rich wines.

☼ Pinot Noir, Pinot Gris, Pinot Liébault

🕒 8–20 years

✓ Frédéric Esmonin • Mugneret-Gibourg • Christophe Roumier • Georges Roumier • Armand Rousseau

LA TÂCHE AOC

Grand Cru



One of Vosne-Romanée's six *grands crus*, this fabulous vineyard belongs to the world-famous Domaine de la Romanée-Conti (DRC), which also owns the Romanée-Conti *grand cru*.

RED While this wine is indeed extremely rich and very complex, it does not in comparative terms quite have the richness of Richebourg, nor the complexity of Romanée-Conti. It does, however, have all the silky texture anyone

could expect from the finest of burgundies, and no other wine surpasses La Tâche for finesse.

☼ Pinot Noir, Pinot Gris, Pinot Liébault

🕒 12–30 years

✓ de la Romanée-Conti

VOSNE-ROMANÉE AOC

This is the most southerly of the great villages of the Côte de Nuits. Some Vosne-Romanée vineyards are in neighboring Flagey-Echézeaux. This village includes the Romanée-Conti vineyard.

RED Sleek, stylish, medium-bodied wines of the purest Pinot Noir character and with the silky texture so typical of the wines of this village.

☼ Pinot Noir, Pinot Gris, Pinot Liébault

🕒 10–15 years

✓ Robert Arnoux • Sylvain Cathiard • Bruno Clavelier • Engel • Confuron-Contédidot • Bernard Dugat-Py (Vieilles Vignes) • Forey Père & Fils • Jean Grivot • Anne Gros • Michel Gros • Méo-Camuzet • Mugneret-Gibourg • Perrot-Minot • Emmanuel Rouget • Fabrice Vigot

VOSNE-ROMANÉE PREMIER CRU AOC

Premiers crus: *Les Beaux Monts*, Les Beaux Monts Bas*, Les Beaux Monts Hauts*, *Les Brûlées*, Les Chaumes, La Combe Brûlées, *La Croix Rameau*, *Cros-Parantoux*, *Les Gaudichots*, Les Hauts Beaux Monts, *Aux Malconsorts*, En Orveaux*, *Les Petits Monts*, Clos des Réas, *Aux Reignots*, *Les Rouges du Dessus**, *Les Suchots*. *These *premier cru* vineyards of Vosne-Romanée are actually in Flagey-Echézeaux.

RED These are well-colored wines with fine aromatic qualities that are often reminiscent of violets and blackberries. They have a silky texture and a stylish flavor that is pure Pinot Noir. The best *premiers crus* to look out for are: Les Brûlées, Cros-Parantoux, Les Petits-Monts, Les Suchots, and Les Beaumonts (an umbrella name for the various Beaux Monts, high and low).

☼ Pinot Noir, Pinot Gris, Pinot Liébault

🕒 10–20 years

✓ de l'Arlet • Robert Arnoux • Albert Bichot (Clos Frantin) • Sylvain Cathiard • Confuron-Cotédidot • Engel • Jean Grivot • Alain Hudelot-Noëllat • S. Javouhey • Henri Jay • Lamarche • Lucien Lemoine • Leroy **B** • Vicomte Liger-Belair • Méo-Camuzet • Gérard Mugneret • Perrot-Minot • Nicolas Potel • Daniel Rion & Fils • Michelle & Patrice Rion • Emmanuel Rouget

VOUGEOT AOC

The modest village wines of Vougeot are a relative rarity, this appellation covering less than 12 acres (5 hectares), which is less than one-tenth of the area encompassed by the Clos de Vougeot *grand cru* itself.

RED Little-seen, fine-flavored, well-balanced wines that are overpriced due to their scarcity. It is better to buy a *premier cru*.

☼ Pinot Noir, Pinot Gris, Pinot Liébault

🕒 8–20 years

WHITE A rarity.

✓ Bertagna • Mongeard-Mugneret

VOUGEOT PREMIER CRU AOC

Premiers crus: Les Crâs, Clos de la Perrière, Les Petits Vougeots, La Vigne Blanche.

The *premiers crus* are located between Clos de Vougeot and Musigny and, from a *terroir* point of view, should produce much better wines.

RED Can be nicely colored, medium bodied, and have an attractive flavo^r with a good balance and a certain finesse.

☼ Pinot Noir, Pinot Gris, Pinot Liébault

🕒 10–20 years

WHITE A clean, rich, and crisp wine of variable quality, called Clos Blanc de Vougeot, is produced by L'Héritier Guyot from the *premier cru* of La Vigne Blanche.

☼ Chardonnay, Pinot Blanc

🕒 4–10 years

✓ Bertagna (Clos de la Perrière *monopole*) • Lamarche • de la Vougeraie **B** (Clos du Prieuré *monopole*)